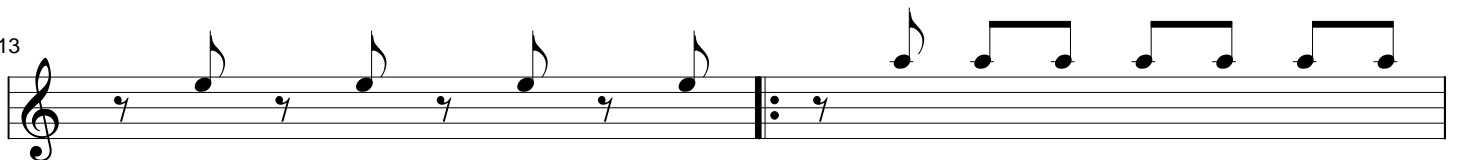
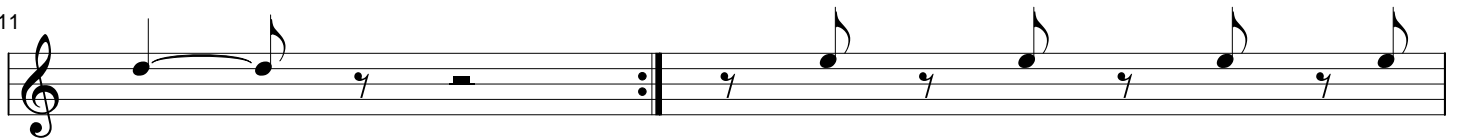
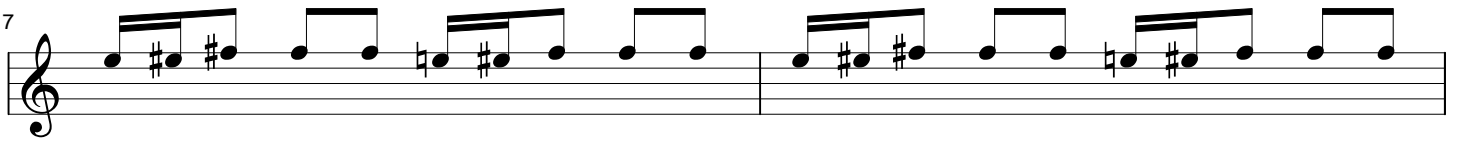
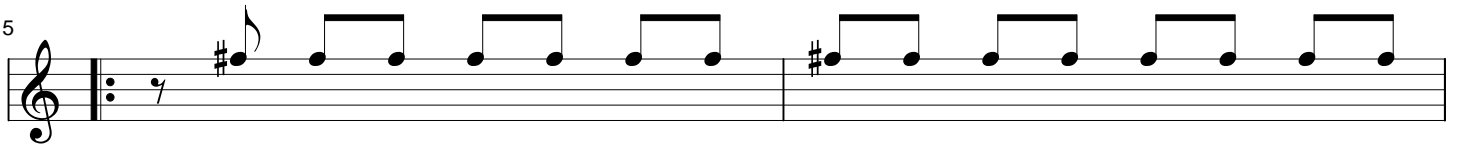
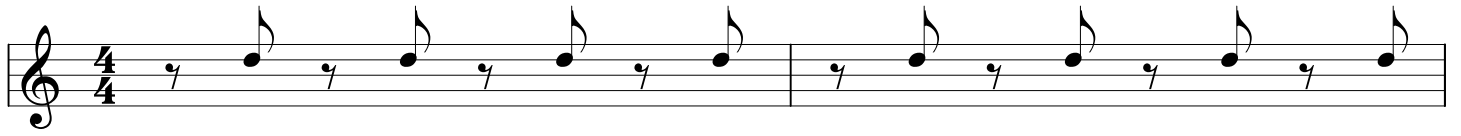


Sabre Dance

A. Khachaturian

Transcribed for 3 mandolins
and TablEdited by Giuseppe Torrissi
www.guitarfreescores.com info@guitarfreescores.com

Mandolin 1



Sabre Dance

A. Khachaturian

Transcribed for 3 mandolins
and TablEdited by Giuseppe Torrì
www.guitarfreescores.com info@guitarfreescores.com

Mandolin 3

Musical notation for Mandolin 3, measures 1-2. The staff is in treble clef with a 4/4 time signature. The key signature has two sharps (F# and C#). The melody consists of eighth notes, and the bass line consists of quarter notes. Fingering numbers 1 and 4 are indicated for the first two notes of the first measure.

Musical notation for Mandolin 3, measures 3-4. The staff is in treble clef with a 4/4 time signature. The key signature has two sharps (F# and C#). The melody consists of eighth notes, and the bass line consists of quarter notes. Fingering numbers 1 and 4 are indicated for the first two notes of the first measure.

Musical notation for Mandolin 3, measures 5-6. The staff is in treble clef with a 4/4 time signature. The key signature has two sharps (F# and C#). The melody consists of eighth notes, and the bass line consists of quarter notes. Fingering numbers 1 and 4 are indicated for the first two notes of the first measure.

Musical notation for Mandolin 3, measures 7-8. The staff is in treble clef with a 4/4 time signature. The key signature has two sharps (F# and C#). The melody consists of eighth notes, and the bass line consists of quarter notes. Fingering numbers 1 and 4 are indicated for the first two notes of the first measure.

Musical notation for Mandolin 3, measures 9-10. The staff is in treble clef with a 4/4 time signature. The key signature has two sharps (F# and C#). The melody consists of eighth notes, and the bass line consists of quarter notes. Fingering numbers 1 and 4 are indicated for the first two notes of the first measure.

Musical notation for Mandolin 3, measures 11-12. The staff is in treble clef with a 4/4 time signature. The key signature changes to one sharp (F#) in measure 11. The melody consists of eighth notes, and the bass line consists of quarter notes. Fingering numbers 1, 2, 3, and 4 are indicated for the first four notes of the first measure.

Musical notation for Mandolin 3, measures 13-14. The staff is in treble clef with a 4/4 time signature. The key signature changes to one sharp (F#) in measure 13. The melody consists of eighth notes, and the bass line consists of quarter notes. Fingering numbers 1, 2, 3, and 4 are indicated for the first four notes of the first measure.